

**Suite 2:
1,827 sq ft**

**4445 S. Eastern Ave., Suite 2
Las Vegas, NV 89119**



FRONTING EASTERN AVENUE!!!

**LEASE RATE: \$2.00 MG • 3-5 year Lease
ZONED C-P • LAS VEGAS, NV 89119**



PROPERTY DESCRIPTION

**Suite 2 - 1,827 square foot fully built-out office available
FOR LEASE!!!**

Space has reception, reception office, 4 large offices, (2) ADA compliant bathrooms, break room, conference room and storage areas.

Suite 1 - VIRTUAL MEDICAL SUITES AVAILABLE FOR LEASE!!!

Medical Executive Suites range from 90 square feet to 127 square feet and have beautiful build-outs with sinks and virtual reception. Medical equipment available upon request, exam table, heart monitor, décor — you name it!

WILL NOT LAST!

FOR MORE INFORMATION CONTACT:

MATT FEUSTEL | Broker / Owner

(702) 480-2403 | matt@areicommercial.com | NV Lic # B.0145204

4955 S Durango Dr, Ste 214 • Las Vegas, NV 89113

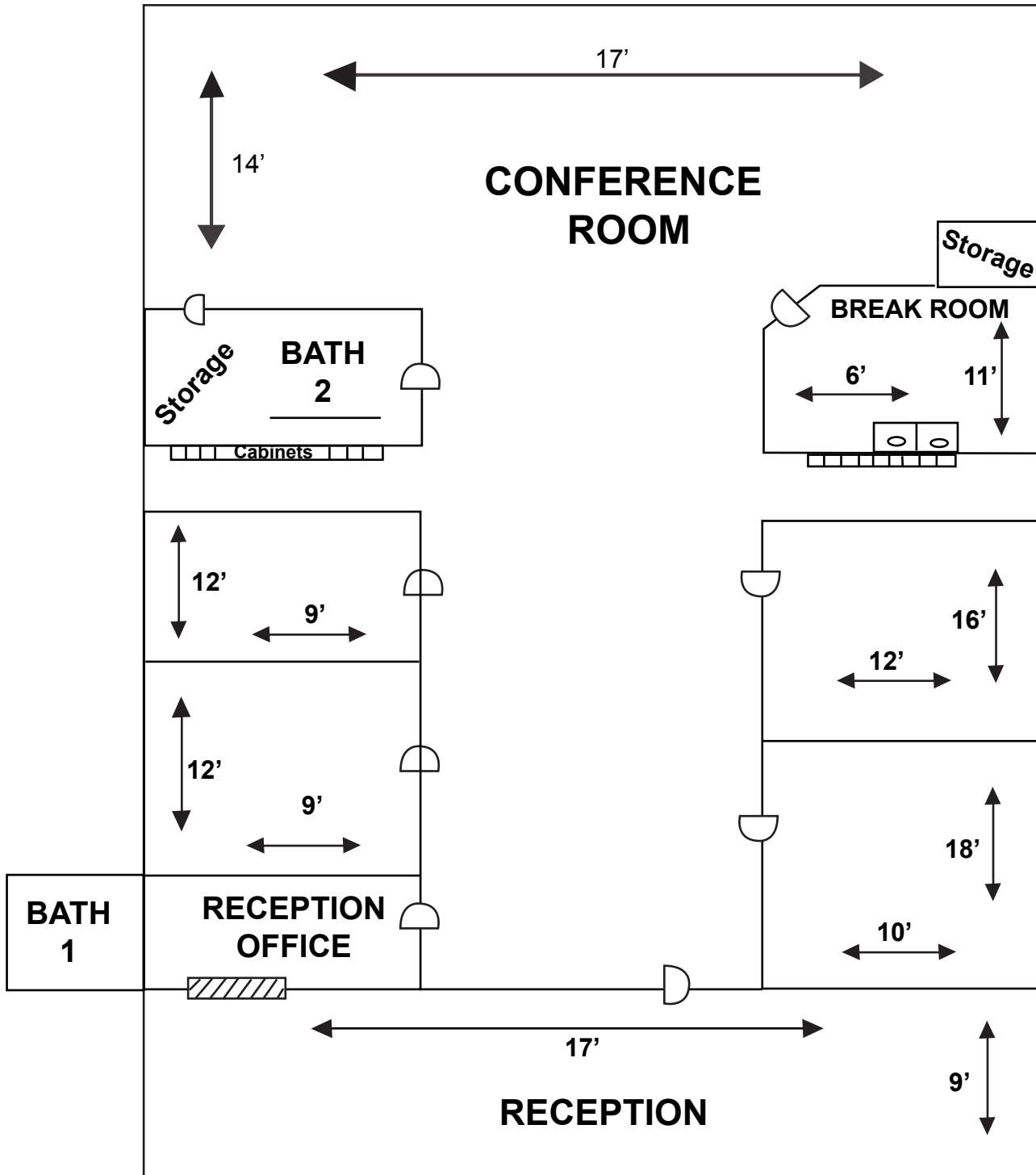
This statement with the information it contains is given with the understanding that all negotiations relating to the purchase, renting or leasing of the property described above shall be conducted through this office. The above information while not guaranteed has been secured from sources we believe to be reliable.



American Real Estate Investments

COMMERCIAL

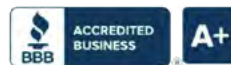




MATT FEUSTEL | Broker / Owner

(702) 480-2403 | matt@areicommercial.com | NV Lic # B.0145204

4955 S Durango Dr, Ste 214 • Las Vegas, NV 89113



This statement with the information it contains is given with the understanding that all negotiations relating to the purchase, renting or leasing of the property described above shall be conducted through this office. The above information while not guaranteed has been secured from sources we believe to be reliable.

★★★
LEASE RATE: \$2.00/SF MG • ZONED C-P • 4445 S. EASTERN AVE., STE 2 • LAS VEGAS, NV 89119



MATT FEUSTEL | Broker / Owner

(702) 480-2403 | matt@areicommercial.com | NV Lic # B.0145204

4955 S Durango Dr, Ste 214 • Las Vegas, NV 89113

This statement with the information it contains is given with the understanding that all negotiations relating to the purchase, renting or leasing of the property described above shall be conducted through this office. The above information while not guaranteed has been secured from sources we believe to be reliable.



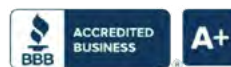
★★★

★★★
LEASE RATE: \$2.00/SF MG • ZONED C-P • 4445 S. EASTERN AVE., STE 2 • LAS VEGAS, NV 89119



MATT FEUSTEL | Broker / Owner
(702) 480-2403 | matt@areicommercial.com | NV Lic # B.0145204
4955 S Durango Dr, Ste 214 • Las Vegas, NV 89113

This statement with the information it contains is given with the understanding that all negotiations relating to the purchase, renting or leasing of the property described above shall be conducted through this office. The above information while not guaranteed has been secured from sources we believe to be reliable.



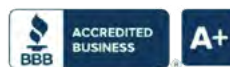


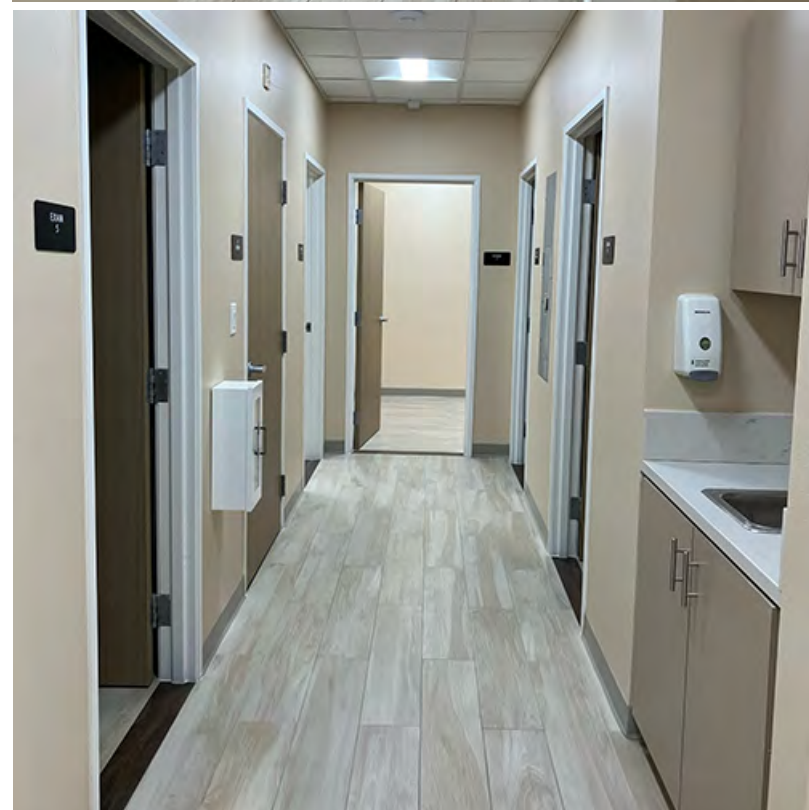
MATT FEUSTEL | Broker / Owner

(702) 480-2403 | matt@areicommercial.com | NV Lic # B.0145204

4955 S Durango Dr, Ste 214 • Las Vegas, NV 89113

This statement with the information it contains is given with the understanding that all negotiations relating to the purchase, renting or leasing of the property described above shall be conducted through this office. The above information while not guaranteed has been secured from sources we believe to be reliable.



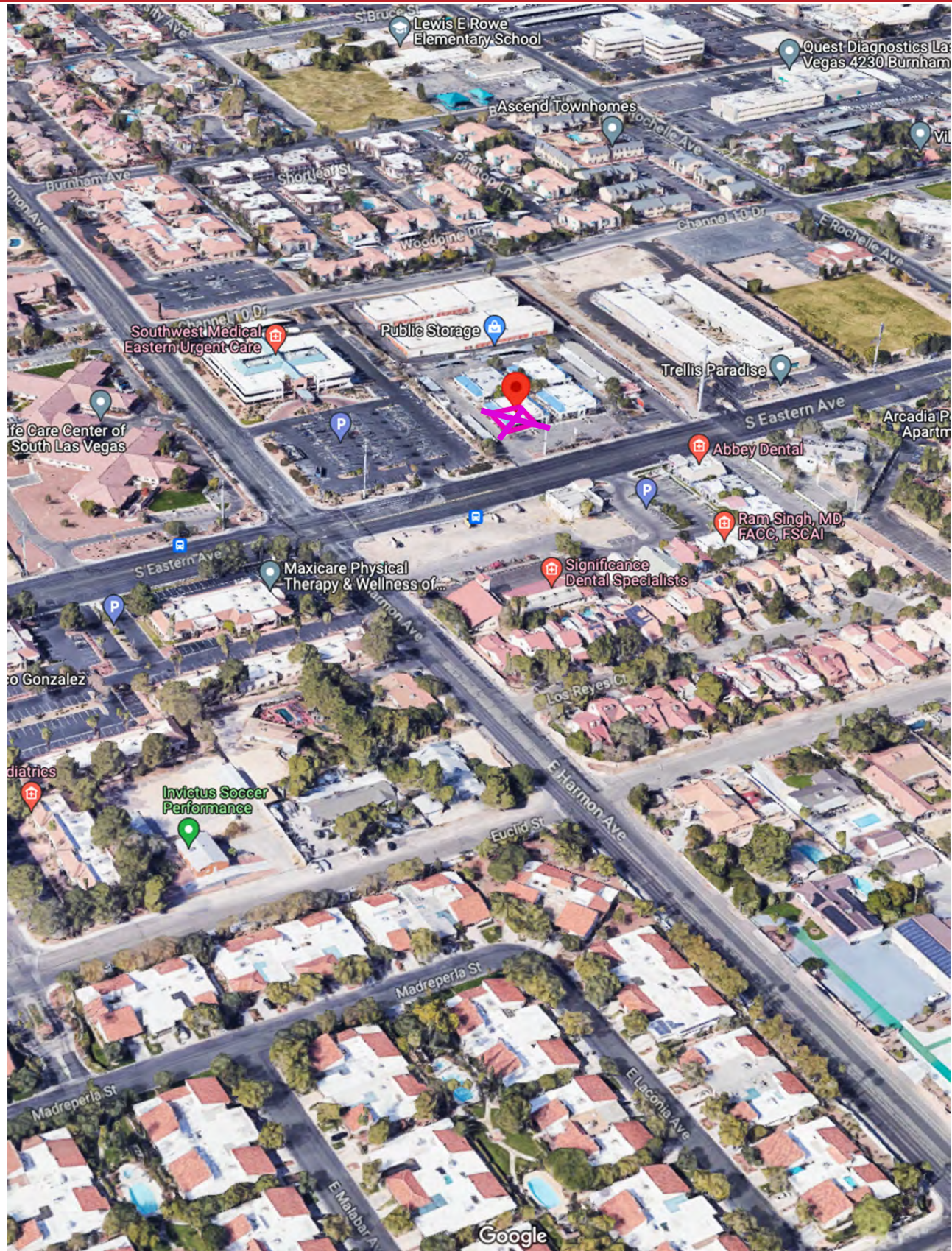


MATT FEUSTEL | Broker / Owner
(702) 480-2403 | matt@areicommercial.com | NV Lic # B.0145204
4955 S Durango Dr, Ste 214 • Las Vegas, NV 89113

This statement with the information it contains is given with the understanding that all negotiations relating to the purchase, renting or leasing of the property described above shall be conducted through this office. The above information while not guaranteed has been secured from sources we believe to be reliable.



LEASE RATE: \$2.00/SF MG • ZONED C-P • 4445 S. EASTERN AVE., STE 2 • LAS VEGAS, NV 89119



MATT FEUSTEL | Broker / Owner

(702) 480-2403 | matt@areicommercial.com | NV Lic # B.0145204

4955 S Durango Dr, Ste 214 • Las Vegas, NV 89113

This statement with the information it contains is given with the understanding that all negotiations relating to the purchase, renting or leasing of the property described above shall be conducted through this office. The above information while not guaranteed has been secured from sources we believe to be reliable.

